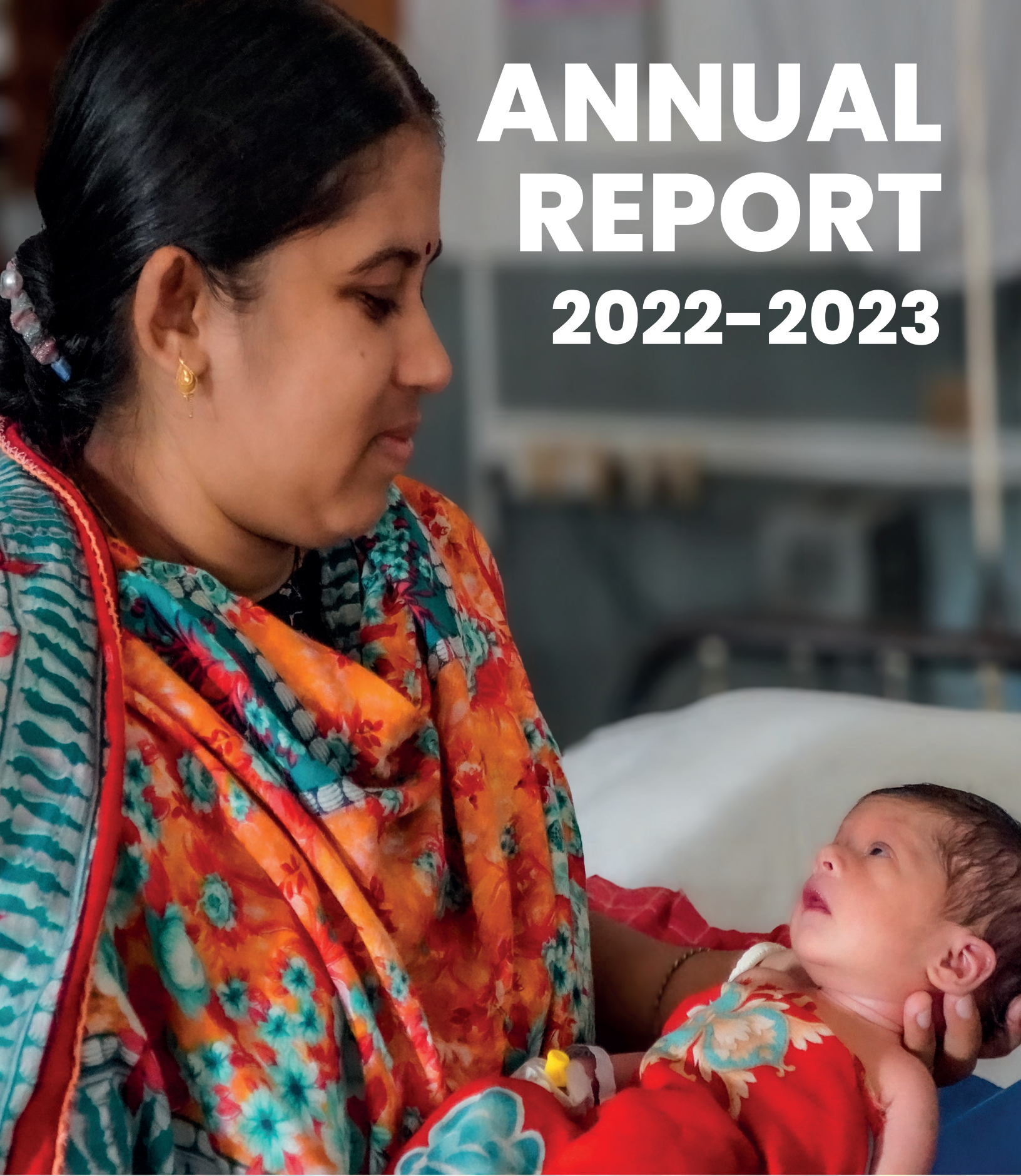


ANNUAL REPORT 2022-2023



ল্যাম্ব  LAMB

যেন জীবন পরিপূর্ণ হয় | সমন্বিত পল্লী স্বাস্থ্য ও উন্নয়ন
That all may have abundant life | Integrated Rural Health and Development

About LAMB

LAMB was first envisioned in the 1950s when Christian missionaries in northwest Bangladesh saw the absence of skilled health care in the area. From a small beginning in community health early in the 1970s, LAMB has worked for over 48 years in NW Bangladesh as an integrated, wholistic rural health and development organization through the provision of our Creator God, following the example of Jesus Christ, and guided by the Holy Spirit.

Vision statement

The people of Bangladesh, transformed by the love of God, experience abundant life in healthy and just communities.

Mission statement

This Christian organization serves God through serving poor and underprivileged people especially women and children.

Organizational Identity

LAMB is a Christian international organization which provides values based, service driven, appropriate levels of excellent care that all, especially the poor & vulnerable, may have abundant life. We serve God through serving the poor.

LAMB Values Following the Example of Jesus Christ
Humble Service: Work in ways that benefits others before ourselves.
Forgiveness: Reconcile relational mistakes and not take offense.
Compassion: Care for patients and one another by putting ourselves in the other's place.
Integrity: Speak truth courageously and act from an upright character.
Equal respect for all: Avoid favoritism or preference because the Creator made people in his likeness and values people equally.
Committed: Pursue an objective faithfully despite hardship.

Legal Status

NGO Affairs Bureau, Government of Bangladesh; Registration number -112; Date: 10.11.1981 (Valid up to 14 May 2030); Department of Social Welfare, Government of Bangladesh; Registration DSW/FDO/R-112; Date: 10.11.1981

Ministry of Health, Government of Bangladesh; Memo No. S-NBR/7-36/75/19 Date: 06.01.1976 (Starting a hospital)

Hospital License No: 69 (for 100 beds) Issued by DGHS, Government of Bangladesh; Issued on 05.06.1982

LAMB English Medium School: মাউশিবোদি/বিদ্যা/অনু/২০২২/৯৬৬(০৬) তারিখ: ৩১/০৭/২০২২; EIIN 135096

LAMB Nursing & Midwifery Institute: বিএনএমসি/প্রশা:/২০২২-৩২২, তারিখ: ৩০ মার্চ-২০২২ খ্রি:

Training institution for doctors appearing in FCPS examination; 1 year training toward specialty certification; Approved by Bangladesh College of Physicians & Surgeons; Approval CPS No: 178/2019/13130; Dates: 10.12.2017 through 10.11.2022

UNICEF Certified Baby Friendly Hospital in 1997

Table of contents

About LAMB	1
LAMB's Strategic Information	3
Where we serve	4
Message from the Board Chair	5
Message from the Executive Director	6
Health Access Program	7
Kobita's Story	8
Health Service Programs:	9
Star Award Program - Strengthening the Referral System	10
Mental Health Program	11
Fistula Care Program	12
Disability Care Program	13
Palliative Care Program	14
Tuberculosis Care	14
Health Workforce Development Program:	15
Minoti Murmu, a Role Model for Midwifery Services	16
Continuing Medical Education for Health Practitioners	17
Community Leadership Development Program	17
Community Transformation Program:	18
Access to Quality Education	18
Toward Gender Equality	19
"Reduce, Reuse and Recycle" wastes in Parbatipur Municipality area	20
Advocacy Program:	21
Immediate Outputs of National-level Advocacy on Fistula	21
Immediate Outputs of Advocacy Workshop on Child Marriage	21
Experience Love of Christ	22
LAMB Partners	23
LAMB Annual Report Output Data FY2023 (July '22-June 23)	24
Financial Statement	25
Glossary	26

LAMB's Strategic Information

Strategic Goal: The strategic goal of the organization is "People of Bangladesh transformed by the love of God, experience abundant/peaceful life in healthy and just communities". Under this goal, LAMB strives to achieve two overarching goals:

1. Experience love of Christ: Through the character, behavior and words of LAMB staff and systems, people in contact with LAMB experience the love of Christ and are offered help to understand what they experience.

2. Wholistic nature of Health: People living in healthy and just communities experience a wholistic and comprehensive state of well-being including physical, mental, social, spiritual and emotional health.

In addition to the two overarching goals there are 4 sub-divisions:

1. Improved health: People most in need, especially women, children and the poorest of the poor have improved health.

2. Pro-poor Health Policy: Women-friendly, pro-poor, appropriate health policies and systems are implemented by the Government of Bangladesh and other health care providers.

3. Responsible Leadership: Leaders and people of influence including community leaders, health care providers, religious leaders and heads of families take responsibility for health and justice in their communities and advocate and apply Biblical values.





4. Community Ownership: Communities take ownership for their health and take responsibility to ensure equitable, accessible health and social systems.

Priority Sector Programs: Based on the strategic goals of LAMB, these are the priority programs:

- Spiritual Development Program
- Health Access Program
- Health Service programs (MNCH & SRH, Mental Health, Fistula Care, Palliative Care, Disability Care, Non-communicable Diseases)
- Sustainable Leadership Development Program (Employee and Community Leadership)
- Health Workforce Development Program
- Community Transformation program (Gender Equality, Economic and Environmental sustainability, Women Empowerment, Emergency Response, Disaster Preparedness, Safe Waste Disposal, Quality Education, etc.)
- Advocacy

Where we serve

Currently LAMB works in 16 districts of Rajshahi and Rangpur divisions through Community Health and Development Programs. Services cover more than **6.3** million people. The hospital receives patients from approximately **700** sq. km. area.

- | | |
|---|--|
|  Health Service Programs (On going projects) <ul style="list-style-type: none"> ● MNCH & ASRH ● Mental Health ● Obstetric Fistula ● Disability Rehabilitation ● Tuberculosis (TB) ● Palliative Care |  Community Transformation Program <ul style="list-style-type: none"> ● Disaster Risk Reduction ● Climate Change ● Education ● Economic Empowerment |
|  Health Access Program <ul style="list-style-type: none">  Health Workforce Development Program  Community Leadership Program | |



Message from the Board Chair



Dr. Peter Halder

I am very excited and delighted to know that LAMB is going to publish their Annual Report for 2023.

We are so grateful to our faithful Lord God for his grace and safety to serve his people in the year 2022-2023. We are happy that we are able to overcome COVID-19, though still there are some challenges around us. But it is very true that through the year we have learnt a lot which will be helpful to run LAMB programs and activities in the future.

Since COVID-19, many people are suffering from Mental Health. I am so happy to know that LAMB is working hard to find a way to help the people who are suffering from mental depression and anxiety. I am sure this is a very good initiative because millions of our people are in need of help in this regard. In the midst of it all, LAMB was able to serve so many people as well as expand its infrastructure too.

Indeed, I am also expressing my gratitude to the local and national government officials, leaders for their heartiest support, and the Executive Director of LAMB, and his staff team for their total commitment and services for the betterment of the community people that the LAMB is committed to serve.

Message from the Executive Director



David Chandran

Dear partners and well-wishers,

We have completed a year of activities and we are thankful to God for enabling us as a LAMB team to serve the communities. We are sharing with you a brief report of what we were able to do. There is more which we would love to share, but that will have to be in person.

It is important to recognize my predecessor, Mr. Kyle Scott, who led this organization as Executive Director since 2015, and few years earlier also. He built the team, and what is in this Annual Report, was basically under his leadership. I took charge as ED in June 2023. We now have a wonderful team and they have been passionate in serving the community.

We have many Community Projects, Hospital Services, a School, Nursing Institute and a Midwifery School. Through these centers, we reach out to the communities. Our focus Region is Rangpur and Rajshahi Divisions, in the North-Western part of Bangladesh. This year we closed down few projects and we hope to find new partners who will support newer projects.

We received great support from many Partners and Funding Agencies. We partnered with many Government Officials and Departments and received support and encouragement from them. Many of them joined us as we mobilized the communities. I am thankful to all our Directors and In-charges of various Departments and Programs, who led their teams which made it possible to achieve these results.

It is our wish and prayer that, every member of the communities will be at peace with one another, care for each other, and enjoy abundant life which is LAMB's goal and vision. We want to reach to the Poor and underprivileged, more particularly the women and children. We wish that every one of our staff team will bring joy to individuals and families, whom they meet with.

As you read through these pages, just remember the sacrifice and hard work done by our staff team, the community leaders and the many who supported us through their funding and wishes. We are looking forward to your continued patronage to LAMB Integrated Health and Development Project.

Health Access Program

Affordable Quality Care

To improve access for the poor and vulnerable, LAMB seeks to identify families most in need of healthcare subsidy, so they do not go further into poverty or end up not getting the care they need. A new assessment tool and system is being finalized for distributing the poor fund more effectively at the Hospital and we continue to explore innovative ways to ensure access to the poor in our target populations.

Highlights:

Significant achievements

- **49** subsidy cards were awarded to pregnant women in Parbatipur Upazila to access services from LAMB Hospital. **71%** of awarded pregnant mothers (Red and Green Card awardees) received maternity care from LAMB Hospital.
- **27%** of women who received ANC/Delivery/PNC at LAMB were from the poorest of the poor (A1 and A2 Category) as per socio-economic status.
- **28%** of inpatients (2,086) received subsidized care (Poor Fund facilities) from LAMB hospital. Among those who received subsidy 76% were assessed as category A1 or A2.
- **4,218** outpatients received subsidized care (Poor Fund facilities) from LAMB hospital. Among those who received subsidy 87% were assessed as category A1 or A2.

Feedback from patients



I went to LAMB for one check-up and then had a C-section delivery. We were admitted 13 days and our bill was Tk 18,057 (GBP 135), but we paid only Tk 500 (GBP 4).

“We could never have paid that bill. If not for LAMB I might have died!” Joynab (Green card awardee)



I had a normal delivery at LAMB but had to go back 9 days after discharge for severe bleeding. I wish I didn't have to go twice, but I am thankful I only had to pay Tk 500 (GBP 4) each time.

“My family and I are indebted to LAMB for the financial help and good care we received.” Laboni (Green card awardee)



My neighbours said LAMB would never give me free care- so I delivered at home. My placenta didn't come out, so we had no choice but to go to LAMB where all our care was free!

“I couldn't believe it! It seemed like a dream. Now I tell all my neighbors to get care at LAMB.” Osmani (Red card awardee)

Kobita's Story



My name is Kobita.

I'm a housewife. My husband, Amol, is a day laborer. There are 7 members in our family. Our family is a family in poverty; somehow, we manage with the money we earn, but we have no savings. We have no land except a house. On top of that, we have a lot of debt. LAMB Hospital is 3 kilometers from my house.

Previous Pregnancy

My previous child was delivered by cesarean section at LAMB Hospital; the total bill was 15,000 taka (150 USD). We were in a financial crisis. It was impossible for our family to pay off the bill. The poor fund allowed LAMB to forgive 10,000 taka (100 USD) and we had to sell our domestic poultry and borrow some money from our neighbors to pay the rest. Later our family had to live in financial hardship.

“ A big stone seemed to have been removed from my chest. We don't have to borrow from others. Our poor family received a lot of support from LAMB.”

Plan Before Health Subsidy Card

Before getting the health subsidy card from LAMB Hospital, my plan was to not have any prenatal check-ups. I planned to give birth to the baby at home because we have no money and no assets to sell to pay for the delivery bills. We didn't even have any savings. We were very worried. If I experienced a lot of complications, I planned to go to a public hospital and then try to raise funds to cover the bills.

Thoughts Upon Receiving Health Subsidy Card

I didn't get charged when I visited Lamb for a prenatal check-up two days after receiving the health subsidy card. At that moment, I was filled with great joy and felt that LAMB is indeed working for the real poor. No additional cost will be added to the family because of me. I used to be always concerned about it and felt bad because the family is already going through a difficult time and will now have to pay additional expenses because of me. A big stone seemed to have been removed from my chest. We don't have to borrow from others.

Our poor family borrow from others. Our poor family received a lot of support from LAMB. We had no income during COVID and had to live on relief and loans from people.

My baby was born on October 7, 2020 by cesarean section and received postnatal care. I spent a week in the hospital; the bill for that was 19000 taka (190 USD). LAMB took care of the entire bill. While admitted to the hospital, the doctors, nurses, and ward employees were good to me; they gave me medicine on time and checked on.

Final Thoughts

May other poor mothers benefit from the same advantages by receiving a health subsidy card as I did. My family and I are grateful to LAMB. I'm very thankful to LAMB for this card. LAMB is working as a true friend to the poor in this area. I hope LAMB continues this kind of work.



A year and a half later, Kobita shows how much her child has grown.

Sweetie's story has been translated and shortened for brevity and clarity, but the words are still her own. She gave permission for her story and photo to be shared.

Health Service Programs

Significant achievements

A comprehensive focus under health service program. Six subbranches (MNCH & SRH, Mental Health, Fistula, Disability, Palliative Care and Non-communicable Diseases) of health services cover wholistic nature of health (spiritual, mental, social, physical, and emotional health). To provide quality health care services, LAMB is following continuum of care approach from household to community to hospital.

Hospital service patient numbers have returned to levels which are like pre-covid numbers. In-patient admissions were **7,497** and outpatient numbers were **54,366** which is **7.14%** (3,625) higher than last year.

Obstetric service: LAMB Hospital continues to focus on improving obstetric services, advocating for vaginal deliveries wherever it is safe. The team is seeing and treating the problems that occur in patients after multiple Caesarean Sections, which motivates them to continue to encourage patients about this. Total number of deliveries were **2,305**, with a Caesarean Section rate of **24.16%** that is almost half of the current national data **45%** (BDHS 2022).

Our national acting Head of Department is leading a five senior and five junior doctors to provide quality care. Our Obstetrician and Gynaecologist from Switzerland is continuing to coach and support the team.



Neonates: In the Neonate department, there is an increasing number of referrals of Neonates from clinics outside of LAMB. These babies often have serious problems which need high dependency neonatal care. Our new acting Head of Department in Pediatrics, who has a diploma in Child Health is leading two senior and three junior doctors, supported by our Pediatric consultant from New Zealand.

Surgery: A total of **1,867** operations have been performed in 2022-2023. Of these **1,310** were gynaecological and general surgical procedures. In General Surgery, our consultant general surgeon from the Netherlands takes care of these patients with the support of a junior doctor who is being trained. Gynecological surgeries are mostly covered by grants for prolapse and fistula.

Star Award Program - Strengthening the Referral System

Over the last few years, LAMB Hospital has invested a lot into strengthening the relationship between the LAMB Hospital obstetric department and the Community Skilled Birth Attendants (CSBA) in the 10 UH&FWCs (Union Health & Family Welfare Centres under the Government health system) of Parbatipur sub-district. The most crucial person in this has been the Quality Assurance Coordinator, a nurse-midwife who is regularly in touch with the CSBAs and with the consultant level doctor of the Obstetric and Gynae department and program lead for the MNCH program. Rigorous efforts have been made to build the capacity of CSBAs through different trainings and sharing meetings. To motivate the CSBAs and the UH&FWC management committees to invest in quality improvement, LAMB Hospital has given out STAR Awards 2023.



Rekha Banu with Star Award Certificate: CSBA of Hamidpur UH&FWC



Award received by Mostofapur UH&FWC committee and CSBA

Three UH&FWCs qualified for 5, 4, and 3 STARs respectively. They got a prize of 25,000, 10,000 and 5,000 taka respectively. This money will be used to support the UH&FWC in becoming more sustainable. A plaque with the STARs is put up in the UH&FWC, showing patients and families that they are meeting quality standards as well as identifying them as being associated with LAMB which helps their reputation. Criteria applied were number of deliveries, patient satisfaction, maintaining protocols, good referrals to LAMB, attending the refresher course, charging poor patients a reduced rate, etc. They were assessed by a quality assurance committee.

The hospital has seen that over the last year, the committee and CSBAs have become motivated and all want to try and get a STAR award. It also has been seen that SBAs are now easily calling our delivery room with patient questions and referrals. It is not easy for the UH&FWCs to compete against the private clinics, and it is tempting to refer patients to private clinics who pay incentives. LAMB is pleased with the success of this project and hopes that numbers of deliveries will now increase.

Testimony

“

We are happy and proud to receive this Star Award. We got the prize last year, but this year we received more money with a certificate this year. We are inspired to work hard. Most people in Hamidpur Union know our clinic, and they respect us. We feel proud to see people are happy to receive our services and mothers and children are healthy. We wish to Allah with our hearts that He will keep the mother and the children healthy. – (Rekha Banu, CSBA at Hamidpur UH&FWC)

Mental Health Program

Significant achievements

LAMB addresses the service gap for persons with mental health needs. In Nawabganj Adolescent Community Transformation (ACT) Project, we piloted a listening intervention called 'Aunties on a bench' modeled on the Zimbabwe 'Friendship bench' project. Our trained aunties provided front line listening support to the adolescents. The popularity of this new cadre of workers is evident as they see a large number of adolescents. As we close the ACT Project in Nawabganj we take lessons learned into new initiatives.

Highlights:

- **405** Aunties trained on advanced listening to provide mental and emotional health support to adolescent girls in Nawabganj.
- **(89%)** Aunties were active and provided **31,917** episodes of listening.
- **2,575** (Service Count) married and unmarried adolescents, both girls and boys with SRH and mental and emotional health issues were referred to the Community Clinics (CCs) and Union Health & Family Welfare Centers (UH& FWC) by Aunties.

In March 2023, we started the MESH Project (Mental Emotional and Spiritual Health) in Parbatipur sub-district. This project provides cognitive behavioral skills building activities to the adolescents in groups. In addition to the 'Aunties on a bench' model, we are piloting a model using 'Uncles' in the new area. LAMB Learning and Development Center (LLDC) is involved in this project and its trainers team offer Basic Mental Health and Advanced Listening training.



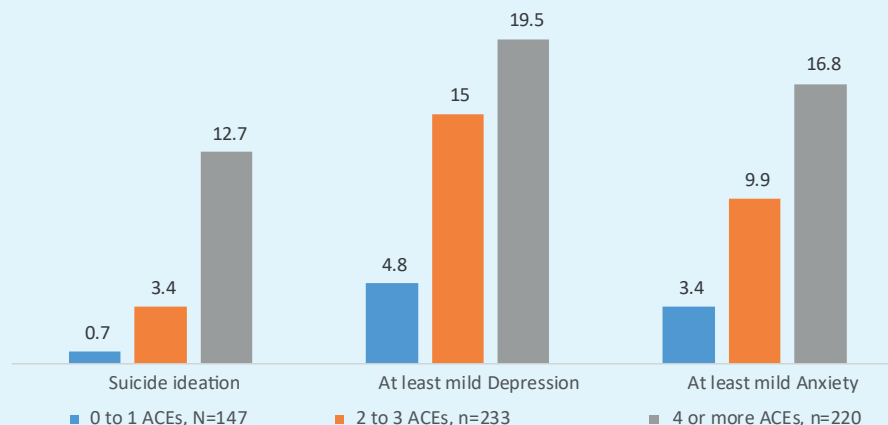
The Counseling Team provide para-counseling services to outpatients and inpatients in the hospital.

LAMB Study

Adverse childhood events (ACEs) which are known to cause a vulnerability around the world to mental illness, are common among adolescents in Bangladesh, but prevention and treatment options are scarce. Low cost and easily scalable interventions are needed to address the need.

Data collected at the endline of the Adolescent and community transformation project (ACT) showed that more than one in three adolescents had experienced four or more adverse events during childhood. The most common events reported were emotional abuse, household violence, and witnessing community violence (each over **50%**) followed by bullying and physical abuse (both over **25%**). Experiencing multiple ACEs were also found to be associated with an increased risk of experiencing suicide ideation (**12.7%** of adolescents with 4 or more ACEs compared to **0.7%** of those with 0 or 1 ACE), depression (**19.5%** vs **4.8%** respectively) and anxiety (**16.8%** vs **3.4%**, respectively) in this population.

Next steps will be to continue to build the knowledge base on Adverse childhood events and prevalence of mental ill health in Bangladesh and include interventions which have been shown to be best practice for preventing and addressing poor mental health outcomes in low resource settings into our projects.



Prevalence of Suicide ideation, depression, and anxiety among adolescents by number of ACEs reported. p<0.001
Reference: CDC. Violence prevention/ Adverse childhood events/ Prevention strategies. ACEs Can Be Prevented (cdc.gov)

Fistula Care Program

It is estimated that approximately **20,000** women are newly diagnosed with fistula each year. Bangladesh government targeted ending obstetric fistula by 2030 and LAMB is contributing to this goal. Yet it is alarming that iatrogenic fistula are increasing and will threaten this goal. Two projects of LAMB, financed by UNFPA and WHI have been working collaboratively to identify fistula patients, operate on them, rehabilitate, and reintegrate them back into society.



Visiting fistula surgeons with LAMB fistula surgeon team

LAMB Hospital has had **5** special camps for vesico-vaginal fistula (VVF) repair with Professor Dr. Sayeba Akter and Dr. Christine Edwards as visiting Gynaecologists last year. For children with congenital fistula, we are receiving support from Indian surgeons during urology camps. This year around half of all our fistula surgeries have been done by our national fistula surgeons.



Fistula surgery

Significant achievements

Highlights

- **171** fistula patients were identified and referred to LAMB Hospital.
- **94** surgeries were done, and 81 (86.17%) patients were fully cured.
- **52** Fistula survivors rehabilitated through govt. and non-govt. initiatives.
- **87%** of fistula patients were dry at discharge from LAMB.
- **80%** reported an increased health related quality of Life.

Momena Regained a New Life



Momena married when she was 14 years old. She had fistula due to prolonged labor in her first pregnancy. The poor knowledge of safe pregnancy and poverty made her pregnancy life very difficult. When she was seen by a health care provider of LAMB she had been suffering from fistula for 17 years. For treatment, she visited various hospitals in Rajshahi, Sirajganj and Bogra Districts and took treatment and spent about 80 thousand taka but could not recover. All the family members and neighbors left her except the husband;

no one came near her. Momena said, *"By the grace of Allah, I came to know about LAMB Hospital and with their help I was cured."* She also linked with local government to get VGF support (Vulnerable Group Feeding) to run her family. Now, they have adopted a daughter. The family is passing their days gracefully, everyday praising and thanking God for all those who supported her medical care.

Disability Care Program

Significant achievements

The Disability Care program is designed to support individuals with disabilities and their families by providing various services, interventions, and assistive devices to improve their overall well-being and quality of life. Families highlighted the program's positive impact on their overall well-being, providing respite care, counseling, and educational support.

Highlights:

- **11,821** participants received education on disability care.
- **29** community clinics on disability care have been conducted in 3 adjacent sub-districts of LAMB to educate caregivers for appropriate care of physically challenged children.
- **784** assistive devices were distributed among children and adults who needed support.
- **238** children with disabilities were admitted to the Rehab center for further treatment.
- **442** club feet patients received services including 350 follow-up cases.



“Rupantor”, which used to be called ‘The Gardening Project for Disabled Men & Women’, has been running since 2010 and currently has **25** members each with significant disabilities. The project gives social empowerment and enhanced quality of life for differently abled people by providing skill development, vocational training and physiotherapy. The vocational training skills taught enable them to work for a wage in the extensive hospital grounds and staff gardens. Vegetables and plants are grown from seeds and cuttings and sold along with Vermicompost also known as “Worm manure”.



The training and occupational therapy provided have been shown to strengthen their self-esteem. We have seen that the regular physical work of the gardening, strengthens the participants’ weakened arms and legs and, according to their parents, they are less withdrawn and have increased mobility. In addition, this project provides an environment where young and older adults marginalized due to physical and mental disability are given a chance to learn, lead productive lives by contributing to their family’s income and participate better in society.

Many of our beneficiaries were previously known to LAMB as they had received treatment at the LAMB Rehabilitation centre when they were children. They live within daily travelling distance and are each in the program in different groups for 2 days per week. We have daily group meetings and regular parent



The gardening team is feeding the newborn calf



The team is harvesting paddy

meetings where we discuss about their progresses made but also listen to their struggles and various needs. We have two full-time staff leading the project with a lot of passion and commitment, supported by Xaver Ambauen.

In the year 2021 and 2022, the “Rupantor” Project has started new vocational training opportunities like fish farming, sheep and goat rearing, cow husbandry, cooking skills and cultivating paddy on newly acquired currently unused land. This year we have brought in the first LAMB rice harvest and witnessed the births of two calves. This helps us to give more individualized opportunities to adjust to the interests and gifts of our beneficiaries. We want to work together for the well-being of people with different abilities.

Palliative Care Program

The palliative care at LAMB started its journey in September 2022. From May 2023, we began working full-time in palliative care, doing home visits, and caring for and counseling patients who come to LAMB. We have seen more than **178** patients, seeking to assess their needs, reduce distressing symptoms, and improve their quality of life through pain control, medication adjustment, and emotional, social, and spiritual support. The Palliative care team has developed training resources for nursing and medical staff, so that the principles of palliative care can improve the overall quality of care we provide at LAMB.

Highlights

- **35** patients (14 male 21 female) were identified and most of them have been suffering from cancer.
- The family members including the patients are very satisfied to have this service from LAMB team.
- **88** patients were being counseled by the Palliative Care team from January to June 2023.
- **4** staff were trained on a foundation Course in Palliative Nursing from India.
- **68** Nurses trained on principles of palliative care that can improve the overall quality of the care we provide at LAMB.

Fruit of our Effort

One of our patients was a woman with advanced rectal cancer along other medical issues who was late in seeking treatment due to the shame of her condition. She lives with one of her sons but for many years had lived separately from her husband and other son. She has been suffering from physical symptoms such as pain, and the social/psychological pain of separation from her family. Our team was able to give painkillers to her, met with the estranged husband, and encouraged him to visit his wife. The result of this was a restored relationship, and the husband added an additional room to his house that enabled his wife to live with the family. As her pain increased, we gave her morphine, which gave her better pain relief during her last days.



“This story is one of many examples of the multifaceted needs that our health team encounters, and we have the privilege of helping to address some of them in Christ's name. - Palliative Care Team

Tuberculosis Care

Significant achievements

- **21,996** suspected cases identified and sputum tested in 4 Upazilas (Parbatipur, Chirirbandar, Khansama and Saidpur).
- **1,736** new and relapse patients were identified.
- **1,690** patients were cured after completion of treatment.
- **98%** cured rate of TB patients in the LAMB working area.

Health Workforce Development Program

Good health systems can only function with quality health workers. Improving health service coverage and realizing the right to the enjoyment of the highest attainable standard of health is dependent on health workers' availability, accessibility, acceptability, and quality (WHO). LAMB aims to develop a qualified health workforce through formal and informal and on-the-job and in-service training opportunities. LAMB is positioned to provide high-quality, relevant training in support of the Health Workforce Development program strategy through the Learning and Development Centre (LDC), Hospital, and CHDP projects.



Nursing students are in the classroom session

Highlights

Significant achievements

- **304** nursing and midwifery students have graduated from LAMB Nursing and Midwifery Institution since 2012.
- A total of **260** nursing (144) and midwifery (116) students are continuing their diploma in Nursing and diploma in midwifery courses.
- **32** (100%) nursing students who graduated in FY-23 have secured **75%** or above marks.
- **132** nursing and midwifery students with low socio-economic status received a stipend or student loan to continue their education.
- **293** (96.38%) graduate students employed in different agencies to serve as qualified health care professionals (govt. 125, NGO 168).



Midwifery students are practicing skill

Minoti Murmu, a Role Model for Midwifery Services



Minoti Murmu, providing post-natal care at Sapmara UH&FWC

Minoti Murmu came from a Santal indigenous community in Gobindagonj, Gaibandha district. Minoti is one of ten siblings, and it was challenging for her to continue her education due to poverty. In the Santal community, the adult men and women all work together in the fields, and she also worked to pay for her education. Minoti said that she was very fortunate that she got the chance to continue her education among siblings as she was determined to be a Nurse. After completion of Secondary School Certificate, her family decided she should marry. Finally, her elder brother supported her to continue Higher Secondary School Certificate (HSC) study considering her determination. After HSC she got a chance to study diploma in midwifery course although she wanted to be a Nurse. She was admitted into LAMB Nursing and Midwifery Institute. There she was chosen to receive the financial support of UNFPA.

After a rigorous process, perseverance, and dedication, Minoti completed the 3 year course and became a licensed midwife. She had a vision and dedication to serve her own community and she got the opportunity at Sapmara UH&FWC, Gobindagonj, Gaibandha district through LAMB-UNFPA Santal Health Project. She proved herself as an agent of change among her indigenous community. Minoti Murmu and other indigenous midwives work together in this facility to provide 24/7 services. Since joining, they conducted 363 normal vaginal deliveries, 5196 ANC and 811 PNC services.



In 2023, ATN News channel selected Minoti Murmu as one of the best midwifery service providers.

Continuing Medical Education for Health Practitioners

Continuing medical education (CME) is the approach of LAMB to enhance the capacity of health practitioners (internal and external) for providing a high quality of care through different projects, departments and LAMB Learning and Development Center.



Training on Basic Physiotherapy Skills

Highlights

Significant achievements

- **49** Community Health Workers trained in Primary Health Care.
- **103** LAMB staff received technical training regards to their profession.
- **1,065** health care providers trained in Kangaroo Mother Care, Helping Babies Breath (HBB) and Primary Health Care.
- **1,047** government health and family planning service providers received health professional training (Safe surgery, fistula care, Infection prevention, quality care).
- **26** Government and LAMB staff trained in Basic Mental Health.
- **151** nurses and doctors received in-house training in LAMB Hospital.

Community Leadership Development Program

LAMB is undertaking the process of identifying, nurturing, and enhancing the skills, knowledge, and qualities of individuals within a community to take on leadership roles and effectively contribute to the betterment of the community. This involves providing opportunities for personal growth, skill-building, and networking, which enable individuals to take on responsibilities, guide others, and drive positive change within their communities.



Community leaders' coordination meeting

Highlights

Significant achievements

- **492** Adolescents, change-makers, decision-makers and other group leaders (SHG and PAD) received training in leadership and management.
- **525** Christian leaders received Christian leadership training and are now providing leadership to their own congregations.
- **1083** youth nurtured and mentored by leadership teams to grow them for future leadership.
- **6,937** UZ/UPDMC and community people trained to tackle adverse situations during and after natural disasters.
- **60** SDU/UH&FWC-MC members trained on following Clinic Management Guidelines, self-financing, fundraising, basic bookkeeping, and sustainability.
- **11**-Child marriage and 9 domestic violence cases managed by upazila child welfare board under subdistrict administration.

Community Transformation Program

Access to Quality Education

LAMB English Medium School seeks to serve God by empowering students with knowledge, skills, and values to thrive in an ever-changing world. Through encouraging critical thinking, creativity, and empathy, we hope to build a lifelong love of learning. We contribute to the vision of LAMB with education; first for children of LAMB staff and then other families. We prioritise girls and a stipend committee supports lower income families. LAMB School seeks to honour God through preparing students to face life's challenges, enabling them to make informed decisions, solve complex problems and contribute positively in their communities.



We are encouraged at LAMB school when we hear comments like these:

New Teacher

"I wanted to teach at LAMB School because I noticed that the students who attend this school really enjoy their schooling. They look forward to being at school each day. I was curious what was different here."

Alumni

"I enjoy coming back to LAMB because I feel peace in this place." // "Thank you for giving us a wonderful childhood." // "This place and these people are my family." // "I learned to know God better in this place."

Parents - former student

"We are so glad our students studied at LAMB school when they were younger, for the first 8-10 years of their schooling. Now when they are giving their HSC exams we know they read and understand English very well and they have also learned to write creatively and independently. Thank you!"

Parents - current student

"We brought our child to your school because we want him to turn out just like the alumni from your school that we know."

Highlights-LAMB School

LAMB school staff and students enjoyed a full year of in-person schooling after 2 years of online education during the pandemic.

About **140** children were part of LAMB school last year (39% girls / 61% boys).

Highlights-Community

307 girls who got married recently and are struggling at school continue their education with the support of CHDP projects.

Toward Gender Equality

Gender equality is not just a women's issue, it's a human rights issue that benefits society. By actively pursuing women's and girls' empowerment, LAMB worked toward a more equitable and inclusive system where girls and women can flourish to reach their full potential.



Leadership development and financial management training

Highlights

- **144** religious-/traditional-/political leaders (LGI & Upazila) are directly involved in child marriage protection activities and declared to make their area and union child marriage free.
- **1,620** men and boys developed and signed a code of conduct honoring the value of women and girls in Parbatipur sub-district.
- **147** women (leaders of Self-Help Groups) trained in Leadership and Management skills to run group activities.
- **800** adolescent girls trained in Leadership skills in Badarganj sub-district.
- **1,200** adolescent girls received Life Skills Based Education (LSBE). LAMB facilitated **98** self-help groups consisting of **1,745** members who have access to financial resources, including savings and credits.
- **1,252** women received loans from their savings group and started income-generating activities like goat rearing, cow fattening, grocery shopping, fisheries, agri-based production, tailoring and poultry farming.
- **3,433,403** tk. as savings and **4,376,500** tk. as revolving loan for income generating activities among women group members. Taka **1,724,589** was made by these groups.
- **53** married adolescent girls continued their higher education by doing part-time work in their households like stitching, goat rearing and poultry farming.
- **1,252** women who received loans from their savings groups started income-generating activities like livestock rearing (goat, sheep and cow rearing), poultry farming (chicken and duck), fishery farms, crops (hazard tolerant crops), kitchen gardening, tailoring and grocery shop.

Significant achievements

A successful Entrepreneur in the Village



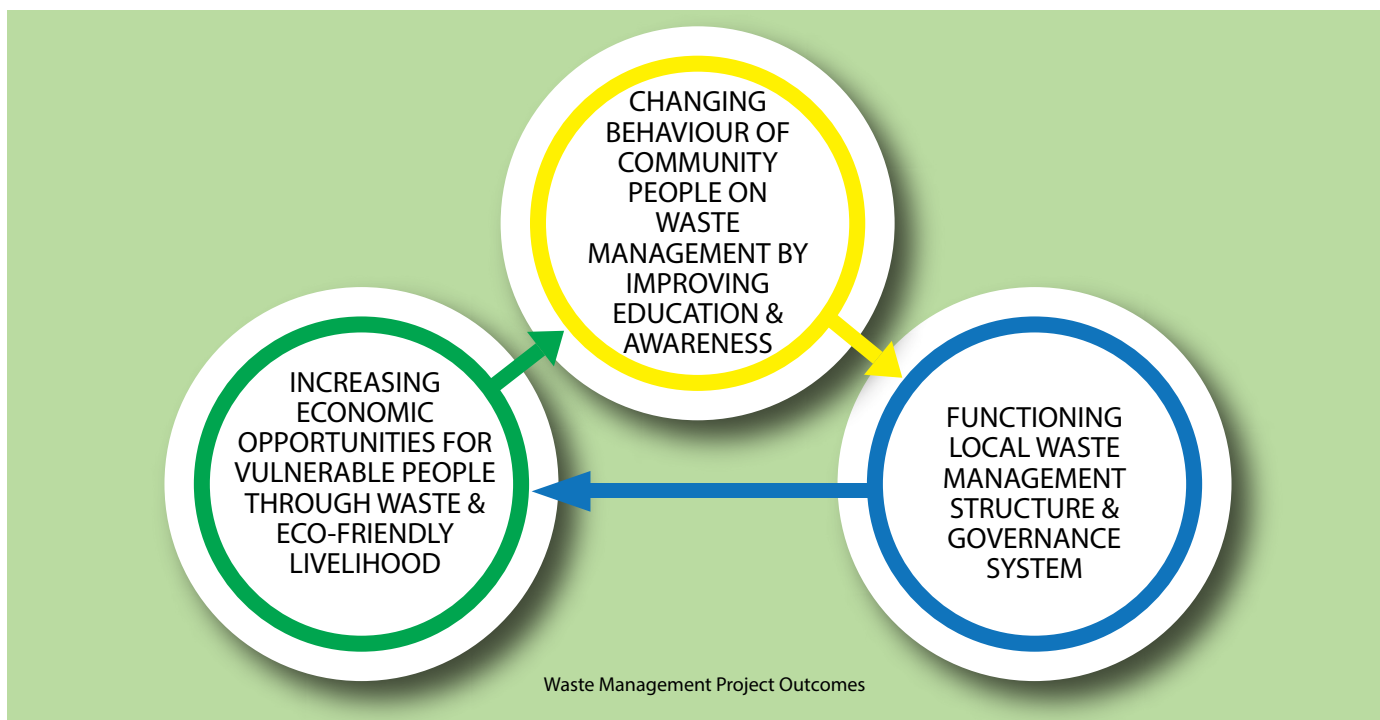
Health Focused-Disaster Risk Reduction (HF-DRR) project activities were implemented in Nageshwari sub-district of Kurigram district. One of the activities was to empower women by supporting them to form Self-help Groups (SHG). In the Self-help groups, women meet together to collect their savings and distribute loans among the members to support their families in need. This savings group activity under the project in Nageshwari gave Sumaiya Begum a pathway to start a shop selling low cost items in her village. Sumaiya is the President of Majher char SHG at Noonkhawa union. Her husband had to move to other places during the lean session for livelihood.

They have two children. Unfortunately, her husband suffered from a stomach ulcer and spent all the savings on treatment. The family was struggling to meet the husband's treatment cost and the children's education cost. "I was so helpless! I am thankful that the HF-DRR project trained me. I got the courage and confidence to open a shop in my village after the training I received from LAMB. Afterwards I took a loan from my Self-help group and started a small shop selling cheap everyday goods. Now, I earn at least Tk. 300 daily from the shop. I am also rearing cows, goats and chickens. With the extra money, I support my husband in cultivating paddy. I worked hard and got the result. Please pray for my business to go ahead to succeed." Said Sumaiya.

“Reduce, Reuse and Recycle” wastes in Parbatipur Municipality area



An effective waste management system is crucial for environmental sustainability, public health, and the overall well-being of a community. A three-year Waste Management Project funded by Tearfund worked closely with the Municipality of Parbatipur to functionalize the 3R Approach “Reduce, Reuse and Recycle” and establish Parbatipur Municipality as a role model in waste management. Several steps have been taken collaboratively with the Municipality and the community.



Highlights:

- Parbatipur Municipality set up a waste segregation and dumping station with technical and materials support and disposal of the materials that cannot be recycled, reused, or composted.
- **11,268** adult men and women are instructed on waste management issues through courtyard sessions.
- **3,783** students educated on waste management issues.

Waste Collection System established:

- **27** bins have been installed in different places of the community to dump household waste.
- **9** collection Vans were repaired for collecting and carrying waste from collection points.
- **68** demonstration plots established and functioning at the institutional level for proper waste collection.
- **29** Municipal staff are trained on proper waste collection, segregation, and dumping systems with necessary materials and equipment.
- **01** Waste processing system was established and functioning well in the community.
- **03** bio-gas plants are installed to process the collected waste and produce bio-gas.

Significant achievements

Proper Disposal

Awareness raised:

Capacity Strengthening:

Advocacy Program

LAMB works to raise awareness and influence decision-makers to create supportive and favorable systems and policies for the most vulnerable people. LAMB's key focuses on the issues of Child Marriage, Unnecessary C Section, Gender-based violence, Fistula, Mental Health, and Proper waste management.

LAMB projects organized **246** events in **58** sub-districts of 16 districts. Early marriage and Fistula prevention were the key topics in the discussion with the government. high officials, members of parliaments, local elites, and NGO representatives.

Immediate Outputs of National-level Advocacy on Fistula

- The President of clinic owners raised their concern about ensuring quality service in all the clinics. The clinic owners also urged assistance from LAMB and the Divisional Health Office to work on improving the skills of surgeons to ensure safe surgeries and prevent iatrogenic fistula.
- Functioning of fistula corners in **16** district hospitals and Surgery facilities at Rangpur and Bogra Shahid Ziaur Rahman Medical College Hospital under the Government of Bangladesh.



Divisional meeting at Rangpur Medical College on Fistula Patient Management - UNFPA, RpMCH and LAMB

Immediate Outputs of Advocacy Workshop on Child Marriage

- The Upazila Administration and the Police Station in Nawabganj sub-district reassured the community that whenever they receive information from Hotline 109 they will take immediate action to stop child marriage and violence against women and children.
- The local Government is committed to ensuring **100%** Birth Registration and stopping issue of fake birth certificates in Nawabganj and Parbatipur sub-districts.
- The Education Department is committed to supporting the project's initiatives for raising awareness of stopping child marriage through the Secondary-level education institutions in Nawaganj sub-district.



Parents' Meeting at School, Ending Child Marriage Project, Parbatipur

Experience Love of Christ

Through the character, behaviour and words of LAMB staff and systems of care, people in contact with LAMB, experience the love of Christ and are offered help to understand what they experienced. LAMB achieves this goal through integrated wholistic project planning, mental, emotional and spiritual counseling, safeguarding intervention and peace building initiatives.



Mission, Vision and Values (MVV) counselors, department MVV champions, hospital chaplains, and projects staff work together to orient and encourage staff to demonstrate loving, caring and compassionate behaviour to all staff, patients, visitors, community people and stakeholders reached through project activities. Last year 1,374 staff received spiritual and emotional counseling to bring peace and comfort in their lives and lead prayerful lives.

Testimony

“

I have been associated with LAMB since 1995 or 96. Working with LAMB gives me immense joy. It is hard for me to travel to LAMB and work there. I accept this trouble because I am impressed by the way LAMB serves people. I'm pleased in any way I can serve people. LAMB is serving people precisely in that way. That is why I make long trips again and again to go to LAMB. I feel blessed to talk to the patients there...May Allah bless LAMB so that it can exist there for many days and provide better medical care to the distressed people by standing by their side. Thanks, LAMB for accepting me as its member. I have always considered myself a member of LAMB family.

Prof. Sayeba* (Visiting Surgeon at LAMB)



*Professor Dr. Sayeba Akhter is an Obstetrician and Gynaecologist who has dedicated her life to eliminating female genital fistula. She is the current President of International Society of Obstetric Fistula Surgeons (ISOFS).

Annana's Story

Annana came to LAMB from far away. This is her story in summary. Annana is a 17-year-old girl who just passed her SSC exam. When her family took her to LAMB, Annana was extremely unwell. She had breathing problems and she was paralysed from her waist down. She had a big wound close to her anus. Smelly fluid came out from the wound, and she couldn't tell if she passed urine and stool or not. The family had taken her to many outside doctors. They also went to the village healer. Because no treatment seemed to work, they came to LAMB on the advice of a fistula patient. Annana was in a very bad condition then. At LAMB Gynae doctors, the surgery, and the medicine team saw her and treatment started. The chaplains prayed for Annana every day. After one month Annana went home.

“

Before leaving Annana and her family said, We have never seen anything like this. Today Annana can walk home on her own feet. The village people will not believe this. Many people will come and see her when we go back to the village. Amazing! We will never forget your prayers, your love, and your care. Please keep praying for Annana.



International Fistula Day Celebration with Rangpur Medical College Hospital



International Women's Day Celebration



Cleaning Campaign lead by the Mayer of Parbatipur Municipality



Adolescent group - Life Skill session, ACT project



Self-help group discussion: 5 danger signs at pregnancy

Output Data FY2023 (July '22-June 23)

Services	Jul 22 to Jun 23	Jul 21 to Jun 22
CHDP General Information	16 districts	11 districts
Upazillas	128	58
Population estimated	37,964,075	26,560,827
Community Health Workers	64	313
Village Health Volunteers	84	368

Mother child health (MCH)	22	80 unions
Households covered	167,064	4,350,331
Safe Delivery Unit	9	7
Family Welfare Centers (FWC)	22	80
Community Clinic(CC)	65	199
C-SBA/midwife	20	92

MNCH SDU data (LAMB data)	7 unions	7 unions
Antenatal Care - clinic visits	5,542	7,472
Family planning clinic visits	1,487	2,090
Child 0-4 yrs. old clinic visits	119	132
Child >5yrs, adult clinic visits	8,298	8,529
Total deliveries in LAMB SDU	990	1,475
	6 unions	20 unions
Pregnancy surveillance	1,261	13,548

Project Opening/Closing Impacts Clinic Number and Population		
MNCH FWC data (GOB data)	20 unions	80 unions
Child 0-5 yrs. old - clinic visits	4,817	9,944
Child >5yrs old - clinic visits	655,339	94,432
Antenatal Care - clinic visits	12,333	64,980
Family planning clinic visits	32,211	26,605
Total deliveries in FWC	1386	7,125
Adolescent Health	29 unions	29 unions
Teaching/ counselling	441	677
Library/Safe space	30	54
Girls received Life Skill training	268	4,042
Boys & girls received basic mental health training	486	10,800

Disabled Child Rehabilitation	3 Upazilas	3 Upazilas
Community Clinics	29	29
Assistive devices distributed	784	701
Health Teaching participants	11,821	10,960
Admitted to Rehab centre	238	233

TB Control	4 Upazilas	4 Upazilas
Sputum tests	21,996	20,969
Patients - new and relapse	1,736	1,707
Patients- cured/ treatment complete	1,690	1,405

Disaster Resilience/Response	1 Upazila	1 Upazila
Preparedness Session on DRR	686	1142

Services	Jul 22 to Jun 23	Jul 21 to Jun 22
Hospital - Inpatients (#beds)	100	90
Total	7,497	7,478
Male	2,106	2,061
Female	5,391	5,417
Obstetric	2,823	3,031
Paediatric 0-4 years	2,294	2,387
Paediatric 5-14 years	219	176
Medicine, surgery, gynaecology	2,161	1,884

Operation /procedure		
Mothers delivered	2,305	2,432
Caesarian Section	557	590
Surgery (gynaecology, general)	1,055	862
Fistula/Prolapse operation	255	228

Outpatients		
Total	54,366	50,741
Male	18,728	16,773
Female	25,011	22,846
Antenatal	10,627	11,122
Children 0-4 years	6,622	6,583
Children 5-14 years	3,950	3,357
Medicine, surgery, gynecology	33,167	29,679
Eye	335	480

Laboratory Services		
Blood Transfusions	941	807
Laboratory Tests	92,712	80,707

Fistula Activities	1628 Unions	N/A
Fistula workshops	221	143
Workshop participants	8,841	4,805
Fistula advocates Trained	11	NA

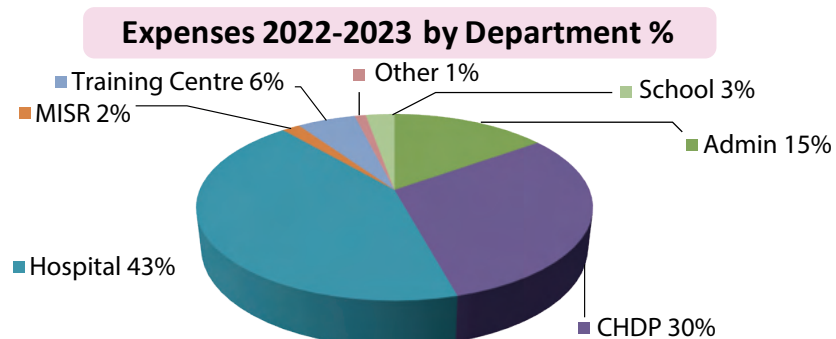
LLDC : LAMB Learning & Development Center		
Total Courses	20	24
Nursing Institute 3yr. students	133	168
Midwifery 3 years students	110	110
KMC, HBB, Primary health care, Etc.	1,065	1,033
Total Trainees	1,308	1,311

School		
Students	129	115
Teachers	23	22

LAMB Staff		
Total	452	535
Male	223	287
Female	229	248

Financial Statement (1st July'2022- 30th June'2023)

Particulars	Jul'22-Jun'23	Jul'21-Jun'22
	Total (Amount in Taka)	Total (Amount in Taka)
Income		
Hospital Fees and Medicine	102,170,967	89,665,519
Training Centre	21,577,219	23,280,752
School	6,661,538	5,976,355
Other activities	48,477,078	52,275,812
Grants	146,334,481	219,950,975
Total Earned Income	325,221,283	391,149,414
Donations	957,174	950,947
Total Donations to LAMB	957,174	950,947
Total Income	326,178,457	392,100,361
Expenses		
Operating Expenses		
Salary and Benefits	164,814,957	193,549,571
Health	122,726,246	126,199,736
Family Planning & Population	298,740	615,985
Public Health	-	68,533
Education, Youth and Culture	3,439,883	4,391,073
Social Welfare	2,017,845	528,421
Women & Children Affairs	6,024,794	3,276,908
Ethnic minority affairs	943,848	1,107,006
Disaster, Relief & Rehabilitation & Housing	3,322,927	2,554,542
Environment, reservation and development	6,166,322	7,219,195
Depreciation	5,592,340	6,004,450
Project Capital Expenses	4,939,336	4,335,016
Supplies And Services	7,030,515	15,903,362
Training, Meeting and Entertainment	7,042,619	18,867,796
Repair and Maintenance	152,749	67,702
Total expenses	334,513,123	384,689,296
Operating result	-8,334,665	7,411,065
Capital Expenditure	979,585	5,521,841
Total Capital Expenditure	979,585	5,521,841



Glossary

ACE	Adverse Childhood Event	LH	LAMB Hospital
ANC	Antenatal Care	LGI	Local Government Institute
AFHSC	Adolescent Friendly Health Service Corner	LSBE	Life Skills-based Education
ASRH	Adolescent Sexual Reproductive Health	MH	Mental Health
BDHS	Bangladesh Demographic and Health Survey	MNCH	Maternal, Neonatal and Child Health
CC	Community Clinic	MESH	Mental Emotional and Spiritual Health
CSBA	Community Skilled Birth Attendant	MIS	Management Information System
CHDP	Community Health and Development Program	MW	Midwife
COPD	Chronic Obstructive Pulmonary Disease	NGO	Non-Government Organization
DGHS	Directorate General of Health Services	NW	Northwest
FCPS	Fellowship of university of Physicians & Surgeon	PAD	Participatory Action for Development
FY	Fiscal Year	PNC	Postnatal Care
FRRei	Elimination of Genital Fistula by Capturing, Treating, Rehabilitating and Reintegrating in Bangladesh	RpMCH	Rangpur Medical College Hospital
GBP	The British Pound	SHG	Self-help Group
GOB	Government of Bangladesh	SDU	Safe Delivery Unit
HBB	Helping Babies Breathe	SRH	Sexual and Reproductive Health
HSC	Higher Secondary School Certificate	SS-FGF	Stop Suffering from Genital Fistula
HF-DRR	Health Focused Disaster Risk Reduction	SDG	Sustainable Development Goal
ICN	Interchurch Network	TB	Tuberculosis
IGA	Income Generating Activity	UH&FWC	Union Health and Family Welfare Center
KMC	Kangaroo Mother Care	UH&FWC- MC	Union Health and Family Welfare Center- Management Committee
LAMB	Lutheran Aid to Medicine in Bangladesh	UNFPA	United Nations Population Fund
LLDC	LAMB Learning and Development Center	UPDMC	Upazila Disaster Management Committee
LCCC	Local Church Coordination Committee	UZ	Upazila
		VGF	Vulnerable Group Feeding
		VVF	Vesico-vaginal Fistula
		WHO	World Health Organization
		WHI	Women's Hope International

Our Supporting Partners

Bangladesh Lutheran Mission Finnish (BLM-F)	KOICA
BRAC	LAMB Health UK
CCIH	MCC
CEDAR Fund	Momentum Country Global Leadership
Finnish Lutheran Overseas Mission (FLOM)	Normisjon
Global Care	Plan Bangladesh
Glenco Foundation	Proshanti
Global Fund	Tearfund
Government of Bangladesh	UNFPA
icddr,b	Walk For Life
IMPACT Foundation Bangladesh	World Renew
Kickstart	

LAMB Program activities in the Hospital, Rehab Centre, MIS-Research, Community Health and Development Program, School, and all the training courses in the Learning and Development Center continue because of the financial support from donors and generous support and prayers from the friends of LAMB around the world.



World Mission Prayer League (LAMB Hospital)
An Organization of World Mission Prayer League, Inc (USA)

Head Office: Rajabashor, Parbatipur, Dinajpur-5250, Bangladesh
Cell: +88 01712 083675, Email: lamb@lambproject.org

LAMB Liason Office: House 481 (Ground Floor), Road 8, Baridhara DOHS, Dhaka 1206, Bangladesh
Cell: +88 01730 456936, Email: dhakaoffice@lambproject.org

www.lambproject.org | www.wmpl.org